

MOTHERS[®]

High Performance Car Care Products





Mothers® has engineered the FX line to be the most sophisticated, state-of-the-art products available today.



NEW—Now in Paste FX SynWax®

Now you can get that great Mothers® paste wax shine in an easy to use pre-softened synthetic formula. Mothers FX® SynWax® is designed to give your paint uncompromising protection while providing unequalled shine and ease of use. Our engineered encapsulation process allows for effortless application, so the wax spreads quickly and easily. Removal is a breeze, leaving behind super-tough synthetic polymers that bond to your paint's surface. Mothers FX® SynWax® advanced technology provides depth, richness, and superior protection against harmful UV damage and other environmental threats.

#20011, 11 oz. Paste

#20016, 16 oz. Liquid

FX Spray Wax

Advanced technology designed for today's paints. Simply mist it on clean paint (wet or dry), spread evenly, then buff to a brilliant shine. It's that easy! Thanks to high-tech chemistry, Mothers FX® Spray Wax can be used as a booster over your existing wax, as a stand-alone product or to maintain high-use areas of your vehicle.

#20224, 24 oz.

NEW – FX Wheel & Tire Cleaner

Cutting-edge technology designed to keep today's wheels and tires looking great. Brake dust and road grime are a thing of the past with this safe, powerful, fast acting, non-acidic foaming cleaner. Its unique spray on, hose off, and let dry design leaves any wheel and tire looking their absolute best. Safe for all factory/OEM wheels and hubcaps, including painted, clearcoated, color coated, steel, modular or chrome.

#20524, 24 oz.

WARNING: FOR USE ON FACTORY/OEM COATED WHEELS AND HUBCAPS ONLY. AVOID POLISHED OR ROUGHCAST ALUMINUM, BILLET OR ANODIZED WHEELS. DO NOT USE ON MOTORCYCLE WHEELS, CASINGS OR COMPONENTS.



FX Tire Shine

Our exclusive high-gloss, state-of-the-art tire surface care technology keeps today's sidewalls protected and looking great. Custom crafted polymers and advanced coating agents bond with the tire's surface, shielding it from UV oxidation, brake dust and road grime. Mothers FX® Tire Shine gives your tires that "just dressed" finish that won't brown or sling.

#20324, 24 oz.



Reflections®

A refined blend of high-tech and high-class, Mothers® Reflections® is for discerning automotive enthusiasts.



Reflections® Car Wax

The latest generation in clearcoat safe paint care technology. Mothers® Reflections® Car Wax is so incredible, we guarantee it to be the best you have ever used. Advancements in liquid polymer technologies allow us to carefully blend mild cleaners with high-gloss polymers. Our product is easy to use and provides a stunning, super wet, long lasting protective shine. Use it as a stand-alone product, or for optimal results, follow with Reflections® Top Coat.

#10016, 16 oz.

Reflections® Top Coat

Reflections® Top Coat is designed as the quintessential high-gloss final step. Top Coat has no cleaners, and is clearcoat safe—so it can be used on top of any car wax, sealant or glaze—and is ideal for use after Reflections® Car Wax. The combination of natural waxes and synthetic polymers gives your paint additional gloss, depth and superior protection.

#10116, 16 oz.

Reflections® Spray Wax

The quick and easy way to add shine and protection. Used on a wet or dry surface, Reflections® Spray Wax is clearcoat safe, and works as a stand-alone product, a booster over existing wax, or as a touch-up on high-use areas.

#10224, 24 oz.

Reflections® Tire Care

Reflections® Tire Care provides a rich, satin-like, non-oily finish that is show car perfect. Our unique formula protects against harsh elements, brake dust and UV damage, yet makes your tires look like new for weeks and weeks.

#10324, 24 oz.

Reflections® Leather Care

The fast, simple, easy way to pamper your car's leather. Reflections® Leather Care's unique pH balanced neat's-foot oil and lanolin formula safely deep cleans and conditions, leaving behind a soft, supple leather surface.

#10424, 24 oz.

Power Products

Mothers® PowerBalls® are the original car care tools specifically designed for consumer machine application.

NEW

PowerBall 4Lights® Headlight Restoration Kit

Designed to quickly and safely restore, maintain and protect all types of smooth, shiny plastic and acrylic headlights to crystal clarity. It easily cleans away yellowing and stains, and even buffs out unsightly hairline scratches, smudges, and flaws in a single step. The included PowerPlastic® Polish restores crystal clarity; leaving a tough protective oxidation inhibiting polymer layer to guard against future degradation from the elements.

#07250, includes: Polishing Tool, 8 oz. PowerPlastic®, two Restoration Pads, 15" x 15" Microfiber Towel





PowerBall 4Paint®

PowerBall 4Paint® makes short work of polishing and waxing large surfaces, contoured edges, and difficult, hard-to-reach areas. Simply attach it to your drill, apply polish or wax, and give any painted finish that showroom quality shine, especially clearcoats. Hundreds of gentle foam fingers work efficiently to give you unmatched coverage with ease. For best results, we recommend you use it with your favorite Mothers® products.

#05147, includes: Polishing Tool, 4 oz. FX SynWax®

PowerBall Mini MD®

Our first ever specialty tool in the PowerBall® family. The PowerBall Mini MD® (Metal Doctor) makes costly wheel repairs a thing of the past. It allows you to safely and easily remove tough scratches and stains from your polished aluminum and stainless steel parts with speed and confidence. Designed specifically for use with Mothers® PowerMetal® Scratch Removing Polish.

#05142, Polishing Tool

PowerCone®

PowerCone® expands our PowerBall® line to offer the widest range of polishing possibilities. It makes quick work of any uncoated, polishable metal finish, no matter how intricate the design. Its ingenious conical shape provides an infinite range of sizes—ideal for getting into tight, difficult-to-reach areas. And the cone's long, tapered side is perfect for polishing broad, curved surfaces. Combined with your favorite Mothers® metal polish, the PowerCone® gives you a deep, mirror-like shine in less time.

#05146, Polishing Tool

PowerBall Mini®

The PowerBall Mini® takes your intricate, hard to reach, tedious polishing jobs and makes them easy. It retains the PowerBall's® signature speed, ruggedness, and versatility, while adding reach and pinpoint accuracy for those knuckle-busting jobs. It's perfect for polishing wheels, diamond plate, taillight lenses, engine components, and much more.

#05141, Polishing Tool

PowerBall®

The Mothers® PowerBall® is the first foam polishing tool designed to revitalize billet, diamond plate, polished aluminum, stainless steel, plastic lenses, convertible top windows, and much more. Ideal for use with our plastic, chrome, aluminum and billet polishes. Its unique and durable construction compresses to fit tight spaces, so polishing difficult, intricate metalwork to a mirror-like finish is fast and easy.

#05140, Polishing Tool

Power Products

Clean, shine, restore, protect.
Mothers® has the right formula for every project,
and any PowerBall®.



PowerPlastic®

Mothers® PowerPlastic® is specifically formulated for use with our PowerBall® line of tools to allow you to quickly and easily polish and protect a wide variety of hard or flexible clear plastics in one simple step. It features a special blend of oxidation inhibiting polymers, UV shields and an ultra-fine polish that work in unison to clean and clarify your headlights, taillights, convertible top windows and more.

#08808, 8 oz.

PowerPolish®

Get that perfect mirror-like depth, clarity and finish that, until now, only a professional could provide. Designed for use with a random orbital or high-speed buffer, its carefully blended ingredients refine themselves during use to provide a uniform finishing process. Mothers® PowerPolish® is versatile and may be used with pads and bonnets of varying aggressiveness.

#08616, 16 oz.

PowerWax®

Designed for use specifically with a random orbital or high-speed buffer, Mothers® PowerWax® is a sophisticated formula designed to achieve a deep, wet, glowing shine. Activated by the mechanical action of a buffer, our PowerWax® provides a deep, long lasting shine. It's the perfect follow-up to PowerPolish®.

#08716, 16 oz.

PowerMetal®

Drawing upon our legendary metal polish formula, we've created an extraordinary liquid metal polish for use by hand or with our revolutionary Mothers® PowerBall® polishing tool. Mothers® PowerMetal® polish is great for all polishable metals, including aluminum, brass, stainless steel, gold, silver and more.

#05148, 8 oz.

PowerMetal® Scratch Removing Polish

Designed specifically for use with the Mothers® PowerBall Mini MD®, PowerMetal® Scratch Removing Polish has just the right amount of complex chemistry and compounds to get the job done fast and easy.

#05150, 10 oz.



Tire & Wheel

The road is not a forgiving place, so the best strategy for keeping your wheels looking great is regular maintenance with Mothers® premium tire and wheel care products.

NEW

Foaming All Wheel & Tire Cleaner

At last, a foaming, non-acidic spray formulated to quickly and easily clean all wheels and tires, including blackwalls and whitewalls. Safe for all factory/OEM wheels and hubcaps, including painted, clearcoated, color coated, alloy, steel, modular or chrome. Our spray on, hose off design safely penetrates, dissolves and suspends all types of brake dust, grease, dirt, and grime, making rinsing a snap. Unique spot-free rinse leaves wheels perfectly clean, with no need to hand dry.

#05924, 24 oz.



Tire Shine

With Mothers® Tire Shine, it's no longer necessary to suffer the trade-off of durability and protection to keep a show-quality shine. Formulated using our exclusive high-gloss, state-of-the-art surface care technology, Tire Shine provides a long lasting, sling resistant protective coating to keep your tires glowing long after the show. It helps prevent sidewall brownout, and keeps brake dust and ultraviolet oxidation from hindering your sumptuous shine worthy of praise.

#06924, 24 oz.

Wheel Mist® Chrome/Wire

When your chrome is dirty, hazed and oxidized, and corrosion is setting in, it's time for the big gun. Our Wheel Mist® Chrome/Wire cleaner is the original, powerful one-step that works on chrome wire wheels, chrome bumpers and roughcast aluminum. Spray on and hose off— this is the quickest way to the sharpest shine your chrome wheels and bumpers have ever seen. Overheated brake dust, surface rust, ground in dirt and oxidation can't evade this high-impact cleaner.

#05824, 24 oz.

Tire & Wheel

The road is not a forgiving place, so the best strategy for keeping your wheels looking great is regular maintenance with Mothers® premium tire and wheel care products.

NEW

Foaming All Wheel & Tire Cleaner

At last, a foaming, non-acidic spray formulated to quickly and easily clean all wheels and tires, including blackwalls and whitewalls. Safe for all factory/OEM wheels and hubcaps, including painted, clearcoated, color coated, steel, modular or chrome. Our spray on, hose off design safely penetrates, dissolves and suspends all types of brake dust, grease, dirt, and grime, making rinsing a snap. Unique spot-free rinse leaves wheels perfectly clean, with no need to hand dry.

#05924, 24 oz.

WARNING: FOR USE ON FACTORY/OEM COATED WHEELS AND HUBCAPS ONLY. AVOID POLISHED OR ROUGHCAST ALUMINUM, BILLET OR ANODIZED WHEELS. DO NOT USE ON MOTORCYCLE WHEELS, CASINGS OR COMPONENTS.



Tire Shine

With Mothers® Tire Shine, it's no longer necessary to suffer the trade-off of durability and protection to keep a show-quality shine. Formulated using our exclusive high-gloss, state-of-the-art surface care technology, Tire Shine provides a long lasting, sling resistant protective coating to keep your tires glowing long after the show. It helps prevent sidewall brownout, and keeps brake dust and ultraviolet oxidation from hindering your sumptuous shine worthy of praise.

#06924, 24 oz.

Wheel Mist® Chrome/Wire

When your chrome is dirty, hazed and oxidized, and corrosion is setting in, it's time for the big gun. Our Wheel Mist® Chrome/Wire cleaner is the original, powerful one-step that works on chrome wire wheels, chrome bumpers and roughcast aluminum. Spray on and hose off— this is the quickest way to the sharpest shine your chrome wheels and bumpers have ever seen. Overheated brake dust, surface rust, ground in dirt and oxidation can't evade this high-impact cleaner.

#05824, 24 oz.



Mag & Aluminum Polish

This is our legendary metal polish. Mothers® secret formula balances a brilliant shine with ease-of-use for aluminum wheels and parts, brass, alloys and accessories. Application is just a matter of a clean cloth and a little elbow grease. Mag & Aluminum Polish is strong enough to put a shine to the most neglected metals, and gentle enough to use on a regular basis.

#05100, 5 oz.

#05101, 10 oz.

Chrome Polish

Designed to work exceptionally well on all chrome, Mothers® Chrome Polish will give you the crisp sparkle you want. Better yet, this polish protects your chrome with advanced polymers, resisting smudges and fingerprints. Use our Chrome Polish on your wheels, bumpers, mirrors, headlight bezels and chrome accessories. It's safe to use on black chrome, and works great on glass. If you want your chrome to gleam with the brightest, this is it.

#05208, 8 oz.



Billet Metal Polish

Mothers® Billet Metal Polish takes our world famous metal polish technology to a whole new level. State-of-the-art cleaners and cutting-edge formulation give your billet, forged and finely cast aluminum, brass and other polishable metals the absolute finest finish available—guaranteed. If you've spent big bucks on quality metal accessories, step up to a polish worthy of your investment.

#05106, 4 oz.



Paint Care

Mothers® Ultimate Wax System®, The Perfect Paint Care System.

Instead of an all-in-one product trying to do multiple jobs, Mothers® has engineered three individual products to address three distinct facets of paint care. With the Ultimate Wax System® you decide what your paint needs—and when it needs it. Does your paint have minor oxidation, scratches and imperfections? Pre-Wax Cleaner is the perfect surface prep treatment. Need extra depth and luster? Sealer & Glaze is formulated to give your vehicle that elusive, show-quality “wet look.” Want to wax without polishing? Pure Carnauba Wax is pristine and pure, with no added polishes or cleaners. Best yet, Mothers® Ultimate Wax System® is absolutely safe for all paints, including clearcoats.



Three Easy Steps



Polish

Pre-Wax Cleaner cleans, smoothes and preps the paint.



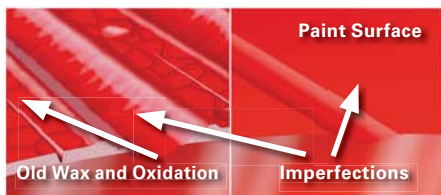
Seal

Sealer & Glaze fills and hides imperfections, adds depth and luster.

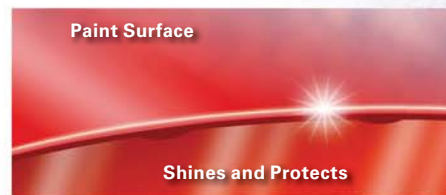
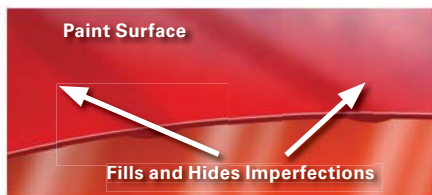


Protect

Long lasting, non-abrasive Pure Carnauba Wax protects and shines.



Clearcoat/Paint Cross Section



California Gold® Pre-Wax Cleaner - Step 1

This is the foundation of the Ultimate Wax System®, preparing your paint for Sealer & Glaze and Pure Carnauba Wax. Pre-Wax Cleaner removes oxidation, old wax buildup and other contaminants, cleaning and shining your paint. This mild polish smooths the edges of larger imperfections and removes small scratches. Your paint's appearance is dependent on a good polishing—Mothers® Pre-Wax Cleaner should be used at least once or twice per year.

#07100, 16 oz. Liquid

California Gold® Sealer & Glaze - Step 2

Regular application of Mothers® Sealer & Glaze will increase your paint's depth and luster. Whatever the color, it will give your paint added character and a brilliant, glowing shine. Sealer & Glaze fills and hides minor swirls and defects, minimizing unsightly visual imperfections. It also contains a super-fine polish that further improves the paint surface. Sealer & Glaze is key to giving both light and dark colors their perfect finish.

#08100, 16 oz. Liquid

California Gold® Pure Carnauba Wax - Step 3

This is the final step on the path to a beautiful finish. Mothers® Pure Carnauba Wax is made with the finest Brazilian #1 yellow carnauba for superior shine and protection. It is non-abrasive, so use it as often as you like. You can also apply more than one coat to keep your efforts well protected. For unsurpassed shine, depth and protection, trust Mothers® Ultimate Wax System®.

#05750, 16 oz. Liquid

#05550, 12 oz. Paste



Paint Care

In paint care, quality makes all the difference. That's why Mothers® has built its reputation on painstaking research, superior quality ingredients, and meticulous attention to detail.

California Gold® Car Wash

We created Car Wash with a careful balance of powerful cleaning and exacting care. You can wash your car thoroughly while protecting your wax. It's not just about bubbles—various dishwashing liquids and “soaps” can harm your wax. Our Car Wash is strong enough to wash away dirt, road film, bugs, bird droppings, airborne pollutants and other grime, without removing wax or dulling the paint. Mothers® pH balanced, super-sudsy cleaner also resists water spotting.

#05600, 16 oz. / #05632, 32 oz. / #05664, 64 oz.



California Gold® Clay Bar System

You've heard about clay bars—professional detailers, body men and your car buddies all talk about how well they work. Now use the clay bar everybody wants. Created to remove the particulate debris and contaminants that washing and polishing can't, our exclusive Clay Bar system will remove embedded grains of metal, tree sap, airborne environmental deposits and paint overspray. Better yet, our clay bar isn't hazardous to your paint—it's just firm enough to pick up the bad stuff, without being too aggressive. Use Mothers® Clay Bar to get rid of paint fouling grime and pave the way for complete waxing.

#07240, includes: two 80 Gram Clay Bars, 16 oz. Showtime® Instant Detailer, 15" x 15" Microfiber Towel

California Gold® Carnauba Cleaner Wax

Mothers® Carnauba Cleaner Wax is designed to be the one-step plan for paint preservation. Cleaner Wax is formulated to clean and protect in just one application. We use the same Brazilian #1 yellow carnauba that makes our Pure Carnauba Wax so special, and combine it with a light polish that will smooth minor flaws and make your paint snap. Carnauba Cleaner Wax is especially effective on fiberglass and gel coats. Available in long lasting, easy-to-apply liquid or paste.

#05701, 16 oz. Liquid

#05500, 12 oz. Paste



California Gold® Spray Wax

Mothers® Spray Wax is the quick and easy way to clean, shine and protect any automotive paint, including clearcoat. Spray Wax removes surface dust and fingerprints, while adding long-lasting shine, luster and depth. Used on a wet or dry surface, Spray Wax works as a booster over your existing wax or as a stand-alone product. Simply spray, wipe and buff to a brilliant shine!

#05724, 24 oz.



California Gold® Showtime® Instant Detailer

Treat your paint to a Showtime® sparkle that's wet and striking. Whether you want to clear a layer of dust or prepare for the judges, use Showtime® Instant Detailer. Its unique formula will clean off fingerprints, smudges and dust, and hide minor imperfections and spider-webbing. Showtime® is designed with color enhancers and shine fortifiers, ready whenever you need your ride to look freshly detailed.

#08216, 16 oz. / #08224, 24 oz.

Interior Care

Ground-in dirt, relentless UV rays, grimy smudges and fingerprints. The typical automotive interior endures abuse on a daily basis. That's why regular maintenance and protection with Mothers® is essential to the longevity of your car's interior.



Leather Cleaner

The perfect smooth leather cleaner. High-traffic leather interiors, convertibles with leather and essentially every other smooth leather should be bathed regularly—it's a natural skin and needs care. Our chemists created Mothers® Leather Cleaner, a pH balanced formula that safely lifts impregnated dirt, grime and stains from your precious leather interior. Meanwhile, when you use our Leather Cleaner, you're preparing that material for Mothers® Leather Conditioner, which will ensure a long, supple life.

#06412, 12 oz.

Leather Conditioner

Our Leather Conditioner will preserve your smooth leather. You've cleaned it, rubbed out coffee stains, food spills and the dirt on the side bolsters, and you don't want to leave that freshly cleansed skin open to new indiscretion. Seal it with Mothers® Leather Conditioner. Our Leather Conditioner is formulated with lanolin and neat's-foot oil to preserve the natural oils lost with age. It leaves a protective barrier that helps seal out the detrimental effects of the sun, time and daily abuse.

#06312, 12 oz.

Carpet & Upholstery

You've never seen your carpet so clean. Use of Mothers® Carpet & Upholstery all fabric cleaner is an eye-opening affair, revealing the true color and character of your interior. Our Carpet & Upholstery cleaner is tough enough to pull out the stubborn stains and marks that mar your vinyl, velour, cloth, carpet and sheepskin, while being pH balanced and environmentally safe. Not just for cars, Carpet & Upholstery works on stains in the home too, and the big 24 oz. trigger spray bottle gives you plenty for all those jobs.

#05424, 24 oz.

Protectant

Preserves and protects for 30 days! Mothers® Protectant is a penetrating UV blocker, effective on rubber, vinyl, plastic and fiberglass. Constructed to recondition and maintain the original condition and appearance of dashboards, bumpers, trim, tires and more. Protectant isn't an oily surface-coating film. It's an ozone and smog resisting, UV shielding penetrant—a preservation agent that works on just about any uncoated plastic or rubber.

#05316, 16 oz. / #05324, 24 oz.

Special Care

When it comes to taking care of your car, detailing involves much more than merely paint, interior, tires and wheels. Enter—Mothers® Special Care. An integral part of the Mothers® line, these products are definitely worth their weight in gold.



California Gold® Scratch Remover

There are areas of your paint's finish that see more abuse than others: on the edges of doors and the trunk lid, around the door handles, keyholes, at the hood latch, etc. What you need is a scratch remover. Mothers® Scratch Remover works on any sort of finish to help restore high mileage paint and remove surface scratches. This is a true polish—be sure to chase it with the standard regimen of waxing to properly seal and protect.

#08408, 8 oz.

Back-to-Black®

As your ride's exterior ages, rubber, plastic and vinyl of all colors will dry, crack, flake and deteriorate. This oxidation can be stopped and reversed with Mothers® Back-to-Black®, our favorite auto care concoction. This trim treatment is great for bumpers, moldings, louvers, window trim, vents, seals, skirts, door handles, wiper arms— anything that's plastic, rubber or vinyl. Apply Back-to-Black® to sunburnt plastic, rubber and vinyl to revive the factory-new sheen, and then re-treat regularly.

#06108, 8 oz.

Plastic Polish

Mothers® Plastic Polish will clean, shine and protect with crystal clarity. This is a genuine polish for buffing out hairline scratches, smudges, oxidation, flaws and little nicks, as well as cleaning away stains and yellowing from your plastic convertible window. Mothers® Plastic Polish doesn't stop there—it protects your plastics from the sun, smog, water stains and airborne contaminants with a tough layer of polymers.

#06208, 8 oz.

Glass Cleaner

Road film, oily deposits and grime don't stand a chance against Mothers® Glass Cleaner. Great on all automotive glass, headlight lenses, mirrors and even chrome, this glass cleaner doesn't leave streaks. Our professional strength formula is safe and ammonia free, so it won't harm your tinted window film.

#06616, 16 oz. / #06624, 24 oz.

SPECIAL CARE





MOTHERS[®]

5456 Industrial Drive, Huntington Beach, California 92649-1519
714/891-3364 • fax 714/893-1827
mothers.com • detailguide.com • waxforum.com

© 2010 Mothers® Polishes • Waxes • Cleaners, Inc.